

SAFETY MATTERS

MARCH/APRIL 2024

THE 2023 FIND IT FIX IT WINNERS DEMONSTRATE TOP-NOTCH SAFETY PRACTICES

GEM's Best FIFIs of the year

1st Place

\$1,000 Visa Card
Trevor Shindorf, Electrician

An associate was driving a 60-foot JLG lift without being tied off. The associate became stuck in the mud and was attempting to get the lift out but was only making matters worse. The lift was on top of two conduits that had live wires in them for temporary service to a building. Shindorf stopped the associate and told him he was buried too deep into the mud to get the machine out, needed to be tied off, and was on top of the temporary service. The associate then got a foreman and proceeded to pull out the lift with a larger machine without damaging the temporary service.



Trevor Shindorf **Matt Vineyard** **Sean Williamson**

2nd Place

\$750 Visa Card
Matt Vineyard, Pipefitter

While performing a fresh-air-supplied, pressure-reducing valve swap on a tank, Vineyard noticed the plant had not put Lock Out/Tag Out measures in place but still issued the work permit. Vineyard informed plant personnel work would not be completed until LOTO was in place and pressure was released in the tank.

3rd Place

\$500 Visa Card
Sean Williamson, Pipefitter

Because of a nitrogen purge, there were low oxygen levels (18%) inside a building that tripped alarms and flashing lights, letting workers know not to enter the building. Plant personnel ignored all the signage, alarms and flashing lights to try to get into the building. Williamson stopped the plant operator before he entered the building and explained to him that he cannot enter.

Random Winners

\$250 Visa Cards
Mitch White, Pipefitter
Josh Griffin, Pipefitter

RLI's Best FIFIs of the year

1st Place

3 PTO Days
Rick Blackmore, Laborer

While excavating for a hydrant relocation, the crew exposed part of a thrust block to an existing riser run. They were told this section of the fire main was shut down so they could complete the work. Blackmore stopped work to double check and found the line was still under 120 psi. He then stopped all work and called the superintendent to let him know and to advise the plant supervisor. When they checked the gauges, one read 150 psi and the other read 0 psi. The 0 psi reading happened because the gauge was closed. When they opened the gauge back up it read 120 psi. They then closed another section of the fire main down to complete the work and prevent a serious accident or injury.



Rick Blackmore **Matthew Shepherd**

2nd Place

2 PTO Days
Sean Williamson, GEM Pipefitter (on RLI worksite)

Because of a nitrogen purge, there were low oxygen levels (18%) inside a building which caused alarms and lights to flash letting workers know not to enter the building. Plant personnel ignored all the signage, alarms, and flashing lights to try to get into the building. Williamson stopped the plant operator before he entered the building and explained to him that he cannot enter.

3rd Place

1 PTO Day
Matthew Shepherd, Carpenter

Shepherd observed an associate point a battery-powered nail gun at his face with the battery still in it. Shepherd informed the associate that the nail gun could accidentally trigger and hit him. He advised the associate to make sure he takes the battery out before trying to fix the nail gun.

Random Winners

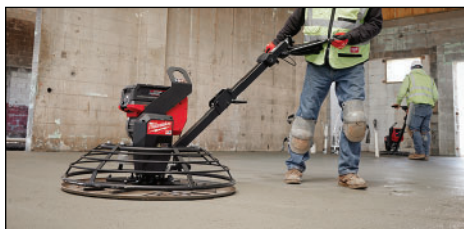
4 hours PTO
Gage Michalski, Laborer
Alex St. John, Brick Mason



RUDOLPH LIBBE INC
GEM INC
GEM ENERGY
RUDOLPH LIBBE PROPERTIES

THANK YOU FOR WORKING SAFELY

GEM pipefitters and ironworkers at Mercy Health St. Vincent Medical Center in Toledo work to get supplies, equipment and materials to the roof of the facility's Central Utility Plant. RLI is under contract to assist in the modernization of the CUP to ensure the facility can meet its utility needs well into the future.



Battery-powered concrete tools reduced noise for businesses next to the work site.

TOOL SPOTLIGHT

Battery-powered concrete tools provide better safety, comfort

Maumee — There was a need to control noise and fumes during indoor concrete work at the Nationwide Children's Hospital Spring Valley site. The RLI crew solved the issues by using the Milwaukee battery-powered MX 36" Walk-Behind Trowel and the MX 6" Walk-Behind Saw, which the Milwaukee provided on a trial basis.

"The main benefit these have over the gas-powered equipment is noise and exhaust fumes," said Cement Finisher General Foreman **Matt Atkin**. "We wanted to use these on this job because our pour was indoors with occupied tenant spaces on each side, and the pour took place during working hours."

No decision has been reached on whether to purchase the tools — which are double the cost of gas-powered versions — but the results of the trial were favorable, Atkin said. Battery life is 20 to 40 minutes for the trowel, depending on the stage they were finishing at. Five battery changes were needed to saw the slab, as opposed to a half tank of gas. RLI has been using Milwaukee battery-operated screeds, which it previously purchased.

REPORTING FIFIS HELPS KEEP WORK SITES SAFE

Here are the best FIFIs for January and February:

GEM February

(Two FIFIs/\$202 gift card each.)

An associate noticed an owner's employee cannibalizing parts out of two old air houses that GEM was going to demolish. The associate discovered the 480v buss plug was not locked out. He had the crew put locks on both buss plugs and inspected the air house unit. The crew found exposed 480v copper ends of wire hanging out of a cabinet tied to the line side of the breaker.

An associate noticed two retractables connected to one another — which are not designed to be used that way. The reporting associate told another associate to remove one of the retractables and explained the dangers.

RLI February

(Two FIFIs/\$468 gift card each.)

A GEM associate found two associates working within the rails of an overhead bridge crane without being properly locked out. The associate asked them to leave the area and contacted his foreman to get the associates locked out at the disconnect.

A GEM associate noticed an owner's

employee cannibalizing parts out of two old air houses that GEM was going to demolish. The associate discovered the 480v buss plug was not locked out. He had the crew put locks on both buss plugs and inspected the air house unit. The crew found exposed 480v copper ends of wire hanging out of a cabinet tied to the line side of the breaker.

GEM January

(One FIFI/\$348 gift card.)

Another contractor was working in a 277v lighting panel and left it open and exposed. The associate had danger tape put up around the area.

RLI January

(Two FIFIs/\$374 gift card each.)

While inspecting a stair tower, an associate noticed the soil around the mud sills were saturated. He walked around the base of the scaffold and pushed the soil with his foot. The soil sunk 2 to 3 inches around every mud sill. He red-tagged the scaffold and notified his supervisor.

An associate witnessed a worker cutting metal with a grinder. The grinder did not have a guard and the worker was not wearing a faceshield. He stopped the worker and reminded him of the requirements for grinding.



MICH. SAFETY TRAINING

Our Michigan associates had their highest participation ever for their annual safety training. It included topics such as distracted driving, communication and injuries, property damage, active assailants, planning/excavation, and MIOSHA Safety & Education.