

# COMMONGROUND

FEBRUARY 2022

## INTERDEPENDABILITY IN ACTION

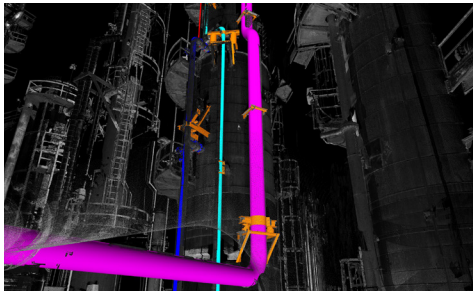
Successful together: GEM's Lima and VDC teams at INEOS

**INEOS, Lima** - As part of the 2021 fall outage at INEOS, GEM's Lima team was awarded the job of replacing a recovery column 20 feet in diameter, 130 feet tall and weighing about 200,000 pounds.

By involving GEM's Virtual Design and Construction (VDC) Group and their 3D laser scanning technology, the Lima team was able to:

- Generate drawings pre-outage for the new piping spools and begin prefabrication sooner.
- Eliminate difficult field welds and costly rental equipment.

"We lowered overall project costs, reduced change orders, added long-term value and delivered a higher quality project," says **Rick Wallace**, RLG Lima general manager. "The VDC group played a major role in this project's success."



A screenshot from the VDC team model

The VDC team got involved early to:

- Scan connection points and piping supports for the column and capture all design material required.
- Create new support and isometric drawings.
- Provide a Navisworks model for quick installation.

"It is always great to work with the Lima team," says **A.J. King**, VDC team leader. "They know what is needed and it helps us give them the best deliverable to make the project a success."



You can always count on me.

- the Building Success Together Roadmap

### Interdependability:

Making the choice to work together and be the person others can count on to accomplish something even greater than what could be achieved working independently.

## RLG'S IDEA LAB IS OPEN 24/7/365

A home improvement contractors' list for associates

Log in and add your thoughts to this idea from **Duane Siewert**:



A contractor list for home improvements – an associate-generated list/database of trusted, reliable contractors for painting, roofing, concrete, carpentry, etc.

If you have an idea to share and have others build upon, don't second-guess it.

Just log in at the Viima link on the GEM or RLI intranet home pages. No Viima account? Contact **Jennifer LaCourse** at [jennifer.lacourse@rlgbuilds.com](mailto:jennifer.lacourse@rlgbuilds.com).

## RLG PEOPLE

Congratulations!



**Kurtis Sutter**, a third-year RLI apprentice, took third place among 11 other apprentices in the MCAA Masonry Skills Challenge in January.

Projects are a surprise, and contestants have three hours to complete them. The event highlights our industry's finest young masons and focuses attention on careers in masonry.

Categories are assigned based on completed apprenticeships, so Sutter competed in the "second year" category.

## January Black history story

The January story in our Black history series featured **Randy Fry**, GEM electrical co-op and appeared in the January 26 Sojourner's Truth ([thetruthtoledo.com](http://thetruthtoledo.com)). For a print copy, contact June Remley, 419-206-1262, [june.remley@rlgbuilds.com](mailto:june.remley@rlgbuilds.com)



## A promotion

**Jessica Mears**  
Assistant Controller  
RLI Walbridge



Continued on back >

RUDOLPH LIBBE INC  
GEM INC  
GEM ENERGY  
LEHMAN DAMAN  
RUDOLPH LIBBE PROPERTIES



## RLG PEOPLE

### Promotions!

**Don McClellan**  
Estimator  
RLG Michigan



**Dana Benner**  
Manager  
Site Management  
RLG Walbridge

**Zach Aichholz**  
Account Manager  
Service Group  
GEM Lima



### A new assignment



**Kyle Dodd**  
Real Estate & Economic  
Development Advisor  
RL Properties  
Walbridge

## SPRING CO-OPS

### 10 new co-ops in Walbridge



**John Al-Hachem**  
Solar.



**Rachel Deal**  
Operations &  
Safety



**Hunter Huffman**  
VDC



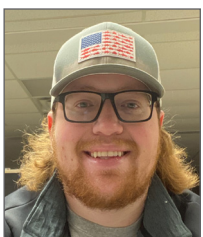
**Amandeep Lochan**  
Proj. Mgmt.



**Feras Nahouli**  
Dit Dahdouli  
Proj. Mgmt.



**Brooklyn Pillar**  
Electrical.



**Zack Poffenbaugh**  
Boiler Div.



**Fatoumata Sidibe**  
Preconstruction



**Hunter Stepp**  
Accounting



**Russell Volk**  
Proj. Mgmt.

Welcome,  
new associates!

**Michael (Mike) Matyas**  
Help Desk Technician  
Information Technology  
RLG Walbridge



**Luke Reiter**  
Business Development  
Manager  
RLI Walbridge

**Eric Aubry**  
SiteLine Coordinator  
RL Properties  
Walbridge



**Andrew Whitehead**  
Business Development  
Manager  
GEM Energy Walbridge

**Molly Patterson**  
Project Engineer  
Mechanical  
GEM Walbridge



**Eugene Liedel**  
Network Administrator II  
Information Technology  
RLG Walbridge



**Amber Hagey**  
Project Engineer  
Civil  
RLI Cleveland



### Benington leads school board



**Eric Benington,**  
Rudolph Libbe  
Companies chief finan-  
cial officer (CFO), has  
been elected presi-  
dent of the Perrysburg  
Board of Education.

### THANKS FOR THE LEADS

Austin Bischoff Kevin Comerford  
Jon Harris Ben Kettler Mike Rumer

Report your leads to:  
**RLI - Christie Fair, ext. 3246,**  
**Christie.Fair@RLGbuilds.com**

**GEM - Elizabeth Hancock, ext. 2603,**  
**Elizabeth.Hancock@rlgbuilds.com**

### Returning co-ops:

**Sam Allen**, Project Management, RLI  
Walbridge  
**Mohammed Alsadah**, Project Manage-  
ment, RLI Walbridge  
**Randy Fry**, Electrical Division, GEM Wal-  
bridge  
**Maddie Kryder**, Mechanical Division, GEM  
Walbridge

### Part-time co-ops:

**Evan Barr**, Special Accounts, RLI Wal-  
bridge  
**Jack Middleton**, Boiler Division, GEM  
Walbridge  
**Johnathon Moore**, Site Management, RLG  
Walbridge  
**Abhishekh Pandey**, Project Management,  
RLI Walbridge