

COMMONGROUND

JULY 2021

INTERDEPENDABILITY IN ACTION

'There are many associates who will support you if you reach out'

Kenworth Trucking Co., Chillicothe - RLG associates have each other's backs - even when they're not working together on a project.

Corey Bettenbrock, RLI project manager, had questions about piping insulation material, installation, compatibility with piping material and potential moisture.



Corey Bettenbrock

GEM wasn't performing the work, and the subcontractor was describing issues that could have impacted schedule and cost.



Bettenbrock wanted an expert opinion, so he talked to **Jeremy Snyder**, GEM insulation project manager. They discussed the situation and reviewed solutions.

They discussed the issue with the subcontractor and ensured that the work was completed on time and at no additional cost. The customer received a quality product that was completed correctly.

"I relied on Jeremy's expertise to ensure that we were doing the right thing for our customer, even though Jeremy was not



involved in the project at all," Bettenbrock says.

"No matter what situation we run across on our projects, there is someone at RLG that we can rely on for advice," Bettenbrock adds.

"Jeremy was able to analyze the situation and give me his expert opinion/advice, so I was equipped with the knowledge to help our subcontractor resolve the issue. One of the best things about working at RLG is knowing there are many associates who will support you if you reach out."

"Ability is important in our quest for success, but interdependability is critical for the success of all," Snyder says.

One Company Thinking.
- the Building Success Together Roadmap

Interdependability:

Making the choice to work together and be the person others can count on to accomplish something even greater than what could be achieved working independently.

RLG PEOPLE Promotions

Dustin Shonk has been promoted to account manager at GEM Service Group.



Welcome to RLG!

Kevin Sealts
Director of Continuous Improvement
RLG Walbridge

Lee Meiring wins 2nd Place in TAUC Craftsman of the Year competition



Lee Meiring, RLI superintendent, took second place in the James J. Willis Craftsman of 2021 competition presented by The Association of Union Contractors (TAUC). The competition is fierce - every union construction trade worker in the nation is eligible to enter.

He was nominated for his role in the concrete foundation work at IronUnits Cleveland-Cliffs.

Meiring credits his 200 coworkers on the project for making the work successful - and earning the award.

More RLG People news on back>



Series on RLG Black associates continues

This month's story in our Black history series features **Chris Stueve**, RLI project manager.

The article will appear in the July 28 edition of *The Toledo Journal* (thetoledojournal.com). For a print copy, contact June Remley, 419-206-1262, june.remley@rlgbuilds.com

RUDOLPH LIBBE INC
GEM INC
GEM ENERGY
LEHMAN DAMAN
RUDOLPH LIBBE PROPERTIES

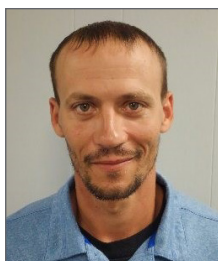


RLG PEOPLE

GEM's Nick Harden places 3rd in apprenticeship program

Nick Harden, of the Lima office, recently graduated from the Ironworkers Local 290 apprenticeship program, placing third out of 24 ironworkers.

He went on to place 10th in the district competition among 24 ironworkers from eight locals.



RLG PROJECTS

Lucas County and Kenworth Trucking

Lucas County Community-Based Correctional Facility – RLG is working on a 27,000-square-foot addition.

RLI is general contractor and is self-performing site work and general trades for the American Buildings Company pre-engineered metal building. **GEM** is installing the metal building and performing siding, roofing, plumbing and HVAC. The project will be complete in late July.

Leading the team:

Troy Fritch and **Nate Schroeder**, preconstruction services

Ron Bodin, pre-engineered building coordinator

Stephanie Andrews and **Dave Crozier**, project managers

Brad Wilson, superintendent

Dave Lutz, foreman

...

Curtis Crego, **Kenworth senior facility engineer**, praises **RLI's** decorative concrete pad for truck display:

"Great work from everyone involved. **Jay [Garcia]** and team did a wonderful job keeping things on track and to expectation. Detillion, with the help of your laborer **Kyle [Blausey]**, completed the landscaping and it looks phenomenal.

"Jay has done a very fine job for me on many projects, starting with the mainline tunnel wall repair last winter. He manages his crews well and does quality work with no callbacks."

Also on the team: **Troy Miller**, **Rudy Cruz**, **Justin Kopp** and **Patrick Carney**.



The 2,500-square-foot pad with 1,850 square feet of pavers

SAVE THE DATE!

Perrysburg Inclusive Playground grand opening

You're invited to the Perrysburg Inclusive Playground grand opening:

10 a.m. Saturday, July 31
Rotary Community Park
26350 Fort Meigs Road

Special thanks to our volunteers: **Ryan Bannister**; **Brandon Boehm**; **Andrew Kramer**; **Scott Libbe**; **Travis Maag**; **Landon Richards**, **Logan Wilson**, and **Bryce Sandwisch** and **Blake Almroth** (both of Penta)

A happy retirement to Mike Arnold



After 32 years with GEM, **Mike Arnold** will retire on July 23.

He joined RLG in 1989 as an electrical estimator/project manager and is now a vice president.

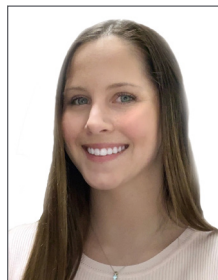
Summer co-op

Michael Schlegel
Mechanical
Engineering
University of Akron
Mechanical Dept.
RLG Cleveland



Summer/fall co-op

Molly Patterson
Indiana State
University
Project Management
Walbridge



GEM SERVICE

New customers

Congratulations to **GEM Service** on signing five new customers:

Avery Dennison
IonBond
Automation and Control Tech
Perrysburg Schools
Crown Lift Trucks



L-R, Matt Atkin, **RLI cement finisher foreman** and **Darrell Summers**, cement finisher, work on the playground.

BE ON THE LOOKOUT FOR LEADS

Congratulations to the second quarter 2021 leads drawing winners:
Alex Koler, GEM **Trent Mahaney**, RLI

Thanks for the leads: **Jon Harris**, **Toni Hubbard** and **Christian Simpson**

Each associate who reports a business lead is entered into a drawing for \$100 in RLI or GEM merchandise. Report your leads to:
RLI - **Christie Fair**, ext. 3246, Christie.Fair@RLGbuilds.com

GEM - **Elizabeth Hancock**, ext. 2603, Elizabeth.Hancock@rlgbuilds.com