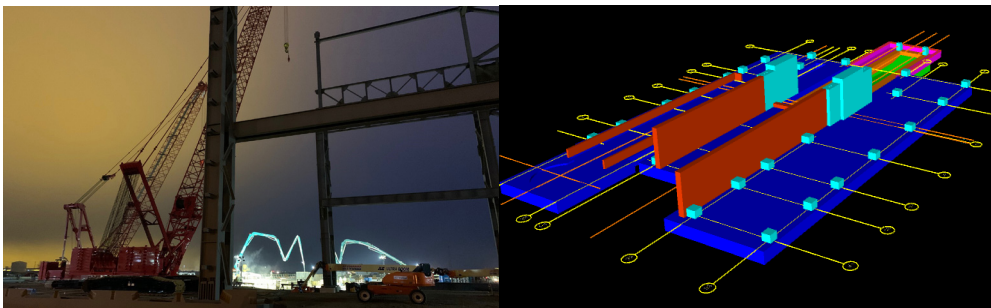


COMMONGROUND

MARCH 2020



Project Aristotle - RLI crews at 7 a.m. March 11 on a 1,000-cubic-yard concrete pour for the North Star melt shop's electric arc furnace with charge floor foundations. The 3D model at right, generated by the RLI VDC team, helped the team coordinate pour sequences.

NEW PROJECTS

Temperance Distilling and NSG plumbing

Temperance Distilling, Temperance, Mich. – RLG is performing process modifications for the specialty alcoholic beverage manufacturer.

RLI is general contractor and is self-performing concrete, demolition, parking, site utilities and trench drain. GEM is performing all process work, including fabrication and installation of a stainless steel platform, structural modifications, equipment setting, piping and electrical.

The project will be complete in late May.

Leading the team:

Brad Delventhal, RLI business development manager

Christian Simpson, RLI preconstruction leader

Travis Philo, RLI preconstruction services

Holly Henn, RLI project manager

Louie Tibai, RLI superintendent

Keith Belair, Jeff Layman, John Marshall, Corey Partin and Anne-Marie

Weimer, GEM project managers

Matt Stremmel, GEM VDC technician

...

NSG Group, Luckey - RLG associates are working on plumbing for five buildings/

Continued on back >

GREAT CATCH!

Pipefitter spots cracked flanges at Lima Fab Shop



Joe Hunneman

Lima Fab Shop – When GEM Pipefitter **Joe Hunneman** inspected 2-inch flanges before prepping them for line installation, he saw a mark on the edge of two flanges.

"I happened to notice it when I was cleaning it up and getting ready to weld it," Hunneman says. "You should

never be complacent."

Hunneman and Fab Shop Foreman **Shaun Ricker** decided to grind into the walls of the flanges and discovered the marks were cracks running more than halfway through the flanges.

Continued on back >

RLG PEOPLE

Welcome!

Jake Myers

Assistant Weld Quality
Control Manager
GEM Walbridge



Kyle Talkington

Proposal and
Presentation Manager
RLI Walbridge

Mario Ramos

Truck Driver/
Warehouse Associate
GEM NE Ohio



Michael Mendrea

Electrical
Superintendent
GEM NE Ohio

Congratulations!

Jeff Schaller has been elected president of the Associated General Contractors of North-west Ohio for 2020-22.



Jim Buchanan has been elected director at large of the American Institute of Architects Toledo for 2020-22. Estimator/Project

RUDOLPH LIBBE INC
GEM INC
GEM ENERGY
LEHMAN DAMAN
RUDOLPH LIBBE PROPERTIES





GREAT CATCH!

Pipefitter spots cracked flanges

> Continued from front

The Lima Fab Shop recognized Hunnaman with a \$100 gift card for inspecting the flanges before installation – and preventing a potential major quality issue.

NEW PROJECT

NSG plumbing systems

> Continued from front

areas: the pump/generator/compressor, warehouse/shipping, office, lehr and tin bath/coater. **GEM** is supplying and installing the plumbing systems. **RLI** is excavating the underground.

Leading the team:

Bob Turner and **Nate Schroeder**, GEM estimators

Bryan Darling, GEM project manager
Stephanie Andrews, GEM project engineer

James Cone, GEM insulation estimator/
project manager

Bob Turner, GEM foreman

Chris Stueve, RLI project manager

Doug Zellner, RLI superintendent

THANKS FOR THE LEADS

Julie Camper **Doug Kadlick**
Mike Keane **Josh Ramey**
 Eric Slink

Report your leads to:
Christie Fair, RLI, X3246
Christie.Fair@rlgbuilds.com

Elizabeth Hancock, GEM, X2603
Elizabeth.Hancock@rlgbuilds.com

CUSTOMER FEEDBACK

ArcelorMittal praises the NE Ohio GEM team

Steve Gunger, senior engineer at Arcelor-Mittal, praises **GEM's NE Ohio** team:

"I am happy with all the projects that GEM participated in.

"I am really happy that the crews were well-educated with ArcelorMittal's safety procedures, HIRAC Lites, work authorizations, hot work permits, etc. and that

they paid attention to the details in the procedures. Safety is the number one concern for us.

"The concrete work associated with the Crystallizer went particularly well, in spite of it being rushed into the end of the year on our end. GEM will definitely be on my list for future capital projects as they arise."

WELCOME - AND WELCOME BACK!

Spring co-ops join RLG



Serafim Anadiotis
GEM VDC



Brock Andrews
GEM Mechanical



Collin Bohland
RLI Proj. Mgmt.



Deven Girdham
RLI Proj. Mgmt.



Amber Hagey
RLI Spec. Accts.



Mitchell Huffman
RLI Spec. Accts.



Dylan Sammons
RLI Precon.



Todd "TJ" Thieken
RLI Proj. Mgmt.

Co-ops returning for spring semester



Justin Bourque
GEM Mechanical



Jayson Cleghorn
GEM Electrical



Landon Richards
RLI Proj. Mgmt.



Zak Greenlese
RLI Spec. Accts.



Kevin Lietaert
GEM Safety



Tristan Roth
GEM Electrical



Gabrielle Delesk
RLG Proj. Mgmt. CLE



Eric Slink
RLI Proj. Mgmt.