

COMMONGROUND

JANUARY 2020

NEW PROJECTS

Penta Career Center solar array and Ohio Air National Guard deployment and fitness center

Penta Career Center, Perrysburg – GEM Energy is design/build contractor for a 1.3-MW solar array on six acres of school property.

RLG trades will self-perform all work except fencing and landscaping. Construction starts in spring 2020 and will be complete in August 2020.

Penta has a 25-year power purchasing agreement to buy electricity from the array, which will be owned by AEP OnSite-Partners.

Leading the team: **Jason Slattery, Kyle Kreft, Nate Knapke, Rick Harris** and **Joel Reid**

...

Ohio Air National Guard 180th Fighter Wing, Swanton – RLI is general contractor for a new 10,900-square-foot deployment and fitness center.

RLI trades are self-performing sitework, concrete, masonry, miscellaneous carpentry, doors, specialty items and acoustical panels. Work will be complete in July.

Leading the team:

Dalton Landers, preconstruction services leader

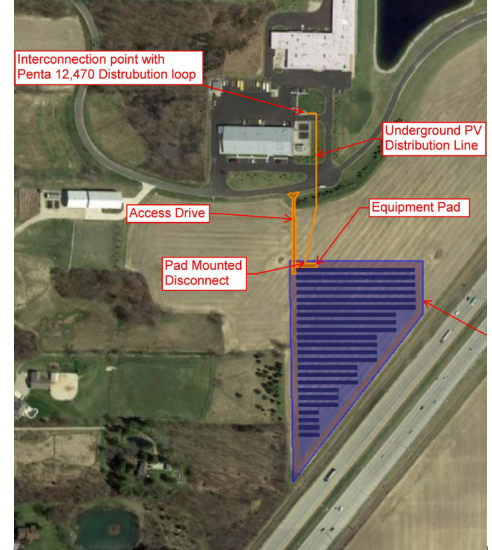
Nick Walby, account manager

Dave Bradfield and **Eric Hinkle**, project engineers

John Balduf, superintendent

Mike Emans, masonry foreman

Continued on back >



A preliminary rendering of the Penta Career Center solar array

CUSTOMER FEEDBACK

Ottawa Hills High School principal comments on the fitness center



Bryan Cox, RLI project manager, at the Ottawa Hills High School fitness center

"Huge thanks to **Bryan Cox**, Rudolph Libbe project manager for the Kadens Family Fitness Center. His attention to detail, effective leadership, warm personality and collaborative style helped us achieve our dream."

That was a Jan. 9 tweet from **Benjamin Murray**, principal of Ottawa Hills High School.

RLI was construction manager for the recently completed 4,000-square-foot fitness center serving the school and community. The center is a masonry and structural steel addition to the high school gymnasium.

Cox also received an honorary Green Bear varsity letter from the school.

RLG PEOPLE

New assignments

Stephanie Andrews

Project Engineer
Mechanical Division
GEM Walbridge



Shane Spring

Account Manager
Service Group
GEM Walbridge

Seeking success stories

Please share your success stories and customer feedback. Contact **June Remley**, 419-725-3119 or june.remley@rlgbuilds.com

RUDOLPH LIBBE INC
GEM INC
GEM ENERGY
LEHMAN DAMAN
RUDOLPH LIBBE PROPERTIES



NEW PROJECTS

Yark Chevy Perrysburg and Asset Protection Corp.

> Continued from front

Yark Chevy Perrysburg - GEM is doing HVAC for the 42,222-square-foot dealership and 4,928-square-foot carwash.

RLI is general contractor/design assist and is self-performing concrete, sitework and masonry.

The project is our seventh Yark dealership. Work will be complete in July 2020.

Leading the team:

Michelle Dean, RLI business development
Andrew Kramer, RLI preconstruction
Jeremy Mitchell and **James Cone**, GEM estimators.

Ron Bodin, RLI pre-engineered building coordinator

Mike Mutscheller, RLI project executive
Don Mathewson, RLI project manager
Jack Wilson, GEM project manager
Brian Liedel, RLI superintendent
Foremen: **Scott Ansell**, **Mark Swope**,

Kyle Gosche, **Ted Twigg**, **Rick Blackmore**, **Eric Eckman** and **Pete Shupe**

Asset Protection Corp., Toledo - GEM is upgrading interior/exterior lighting and HVAC systems after a GEM Energy Facility Risk and Expense Evaluation. The project is scheduled for completion in early February.

Leading the team:

Johnathon Grace, project coordinator
Greg Steenrod, senior business development manager
Glenn Powers, energy manager
Brian Hinde, electrical project manager

GEM ADDS HVAC WORK

80+ new contracts last year

In 2019, **GEM** added over 80 new HVAC contracts. Here are the 37 added in the second half of 2019 alone:

AAA Allied Group Inc
The Ability Center of Greater Toledo
Capstone on Campus Case Western Reserve (16 locations)
Do It Best Corp.
Etkin Management LLC
Filling Memorial Home of Mercy (two locations)
GROB Systems Inc.
Harbor Behavioral Health (two locations)
Hotel at Oberlin
Hylant Cleveland
Jones Hamilton Company
Kawasaki Robotics USA, Inc.
Matheson Tri-Gas (three locations)
Optima Management Group
Total Sports Complex
Tri County Tarp LLC
WF Whelan
Zoar Lutheran Church



The new elevator at
Central Catholic High School

CUSTOMER FEEDBACK

Central Catholic Elevator

Kevin F. Parkins, head of school at **Central Catholic**, says of RLI's work on the new school elevator:

"Rudolph Libbe gave us strong communication updates. They were our partner on the project. They had respect for an educational environment.

"They talked us through changes and surprises – and there were a few along the way. They asked the tough questions about maintaining safety and security.

"Our Rudolph Libbe experience was great. We felt like they advocated for us."

FM 2019 CONTRACTS

25 renewals; 13 new customers

In 2019, 25 **Facility Management** customers renewed contracts. Thirteen new customers signed up:

City of Rossford
Communica
Community Day Care
Federal Mogul
National Kidney Foundation
Paramount
ProMedica/Forever Fit
The Sight Center
Superior Uniform
TDC Companies
Thrive Childcare
Total Sports Complex
UT Foundation

WINNERS OF THE 4TH QUARTER 2019 LEADS DRAWING

Congratulations to the winners of the RLG leads drawing for 4th quarter 2019:

Joe Gajdostik, GEM
Duane Siewert, RLI

When you report a business lead, you are entered into a drawing for \$100

in GEM or RLI merchandise. The next drawing is in April for leads reported in January, February and March.

Thanks for the leads:

Liz Cook
Michael Jarrell

Report your leads to:

Christie Fair, RLI, X3246
Christie.Fair@rlgbuilds.com

Elizabeth Hancock, GEM, X2603
Elizabeth.Hancock@rlgbuilds.com