

# SAFETY MATTERS

NOVEMBER/DECEMBER 2019

## NEW SAFETY EQUIPMENT BENEFITS SMALL JOBS

Aluminum trench boxes are lighter and easier to assemble

RLI's two new aluminum trench boxes are useful safety equipment for small projects.

Aluminum shoring's advantages:

- Very lightweight - hundreds of pounds lighter than steel shoring.
- Easy to assemble.
- Modular and can be built in place to accommodate different sized excavations.
- Portable and can be transported by pickup truck.

"It is easier to use on small projects where you don't have the equipment to handle the heavier steel shoring," says **Kevin Burtchin**, RLI sitework superintendent.

"Lots of municipalities use it. You can use a backhoe to get it in. You can put it together by hand," Burtchin says.

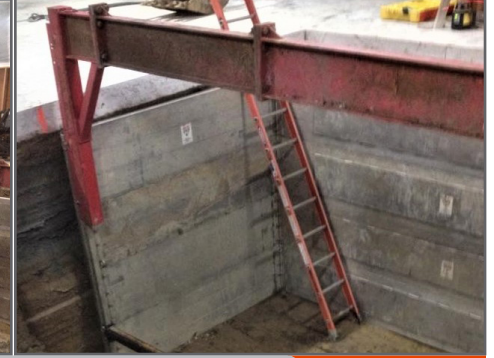
**"The aluminum trench boxes are lighter and they can be utilized easily in tighter areas."**

- **Ted Twigg**  
RLI pipe foreman

"It's quick, simple and light. I like it," says **Donnie Fredritz**, RLI laborer.

"The aluminum trench boxes are lighter and they can be utilized easily in tighter areas," says **Ted Twigg**, RLI pipe foreman.

**Rick Blackmore**, RLI laborer foreman, says, "The panels are easier to put together by hand and we can custom-build them. If you need to work around miscellaneous pipes, you can move panels up to accommodate them and still be protected on all sides."



RLI rented aluminum modular boxes for this project inside the Jeep plant last winter before deciding to purchase them.

## BETTER ORGANIZED TOOLS

Retrofitted gangbox is a prototype for more accessible storage

A retrofitted gangbox at the RLI office addition is a prototype for better organized, more accessible tool storage.

**Rick Turner**, superintendent and a member of RLI's tool committee, worked with **Scott** and **Joe Phillips** in the yard to improve the cluttered gangbox by installing tool holders for cordless tools.

GEM electrician **Dave Gottschalk** installed gangchargers and outlets inside the gangbox and a recessed power outlet on the gangbox exterior.

Their next assignment is to find a way to store roto hammers and identify magnets for hanging drill bits.

"Before we did the retrofit, there was a lot of space wasted and the gangbox was poorly organized," Turner says. "The crew seems to like it now. They're using it. It's easier to find things."



The retrofitted gangbox is more organized and efficient.



RUDOLPH LIBBE INC  
GEM INC  
GEM ENERGY  
LEHMAN DAMAN  
RUDOLPH LIBBE PROPERTIES

 RUDOLPH  
LIBBE INC  
RUDOLPH LIBBE GROUP

## FIND IT-FIX IT

### Keep safety in the conversation

One of Find It-Fix It's greatest strengths is the program's ability to get people talking about safety and finding solutions.

Here are some recent submissions for home safety as well as safety on the job:

**Unsafe condition:** A fire extinguisher was too close to some fuel tanks.

**Solution:** An associate moved the fire extinguisher at least 25 feet away from the fuel tanks.

**Unsafe condition:** Tracks on an excavator needed to be cleaned.

**Solution:** An associate cleaned the tracks to prevent slips and falls.

**Unsafe condition:** D-stakes did not have rebar caps.

**Solution:** An associate put rebar caps on the D-stakes.

**Unsafe behavior:** An associate was standing on formwork with uncapped rebar below him.

**Solution:** Another associate helped him cap 10 to 20 rebars.

**Unsafe condition:** Piles of paper were collecting near a power strip that was suspended one inch from the ground.

**Solution:** An associate replaced the power strip with a long cord and moved the paper away from the power strip.

**Unsafe behavior:** A subcontractor was on an extension ladder with an improper pitch.

**Solution:** An associate told him to get down and reset the ladder properly.

**Unsafe condition:** An associate's Nomex pant legs were dragging.

**Solution:** Another associate gave him wraps to tie up his pant legs and eliminate the trip hazard.

**Unsafe behavior:** A neighbor was using an angle grinder with no PPE.

**Solution:** An associate gave him gloves and safety glasses to use.

**Unsafe condition:** An electrical groundwell was covered with plywood.

**Solution:** Because the plywood could not support equipment, an associate placed a cone on top to warn operators.

**Unsafe condition:** A Pop-Tart broke in a toaster.

**Solution:** An associate unplugged the toaster before using metal tongs to retrieve the Pop-Tart.

**Unsafe condition:** The pin was out of a fire extinguisher.

**Solution:** An associate found the pin and put it back in the fire extinguisher.

## RLI 2020 SAFETY MEETING

7 a.m. to noon  
Saturday, February 8, 2020  
Penta Career Center  
9301 Buck Rd, Perrysburg

## IT'S COLD OUT THERE

### Stay warm, dry and hydrated

People who work in cold temperatures are at risk for injuries ranging from frostbite to serious loss of body heat, which can cause brain damage or death.

#### Stay warm and dry

- Dress in layers – the space between your body and the outer layer of clothing keeps you warm.
- Wear wool or cold weather synthetics to insulate and let sweat evaporate.
- Protect your feet, hands, head and face from the cold and wet.
- Always bring extra clothing, including socks.

#### Take a break

- Take breaks to warm up and re-energize. When you're tired, your body loses heat and can cool rapidly, which can quickly lead to cold stress.
- Drink warm, sweet, caffeine-free drinks and soup to replace lost fluids and calories.

## IT'S A BUSY TIME OF YEAR

### Set the distractions aside and stay focused on safety

It's easy to get distracted, especially during the holidays.

No matter how busy your holiday season, stay 100 percent focused on safety when you're at work.

If you find yourself thinking of anything other than performing your tasks safely - stop for a few seconds and come back to the present.

Take the opportunity to look around and make sure you and your coworkers are safe. The number-one cause of many safety incidents is the failure

to identify and eliminate hazards early - before they have a chance to become incidents.

This is true for every kind of incident, from pinch-points to falls to weather-related injuries/illnesses.

Focus makes all the difference. Don't let anything distract you when you're working.

Our lives are full of commitments - but your first commitment to yourself and your loved ones is to stay safe.

It's the season for snow, ice and wet leaves—the perfect combination for a

## SLIP, TRIP OR FALL.

**25,000 slip, trip and fall accidents occur daily in the U.S.**

**Wear appropriate winter footwear, use walkways that are salted and shoveled and never jump from vehicles or equipment.**

