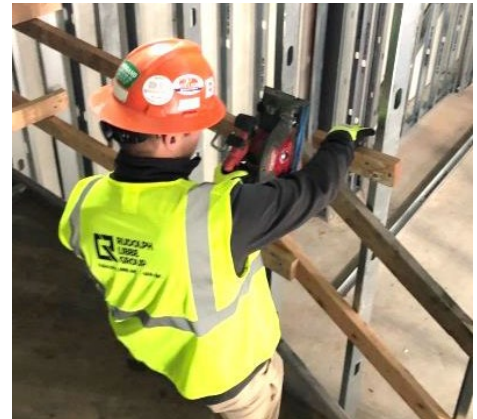


Safety Flash

Incident with Recordable Injury

Incident: Two associates were installing a stair railing and guardrails. One associate attached the 2x4 top rail with one screw near the wall end and pivoted the 2x4 above the stair rail to cut off excess material. He operated the cordless saw with his left hand, holding the 2x4 up with his right hand. As he completed the cut, the unsupported piece to the left of the saw pinched the blade, causing the saw to jump and cut his right hand as he held the cut-off end.



A re-enactment of the incident

Possible contributing factors:

- The 2x4 was not measured and cut before installation.
- The worker did not have two hands on the saw because he needed to hold the 2x4 to cut it.
- The worker is left-handed and had to hold the 2x4 with his right hand and cut with his left.
- He did not secure the 2x4 in place before cutting it.
- The task was assigned just before lunch, so he may have been rushed.
- His gloves were not designed to stop saw cuts but may have reduced the severity.
- He did not recognize the hazard – that he should support/secure the piece being cut rather than the piece to be cut off.
- He might have been standing with one foot on the landing and the other foot on the top step below, placing him in front of the cut.
- The associate didn't ask his coworker to hold the board while he cut it.

Primary contributing factor:

- The 2x4 was not measured and cut before installation.

Possible solutions:

- Train workers to be aware of hazards and to secure material before cutting.
- Don't hold the drop end or small/short pieces.
- Choose a body position, based on whether you are right- or left-handed, that keeps you out of the line of fire.
- Ask for assistance to keep material from falling.
- Review RLI's safety manual to determine needed revisions on power tool use.

Action plan:

- RLI will develop hazard awareness training and procedures for safe power tool use.
- RLI will meet with the customer to develop safety manual revisions for power tool use.
- A stand-down will be held on the incident and revised site requirements.
- The stairway will be open for use only when complete.

Keep improving

Your health and safety are our core value on every project. If you see a way we can support you in keeping our job sites safe, see your supervisor or contact: Jim Philo, 419/654-2043; Rich Franklin, Michigan, 734/679-7283; Alan Doane, Cleveland, 440/429-0639; Chad Metzger, Lima, 419/279-5348 or Mark Hoffman, 419/360-9280.