

COMMONGROUND

MAY 2018



First Solar's new facility will be located within a mile of its flagship manufacturing center in Perrysburg Township and just down the street from RLI and GEM's headquarters on the corner of 795 and Tracy Rd.

NEW PROJECTS: FIRST SOLAR AND CLEVELAND-CLIFFS

Lake Township - RLI is design/build contractor for First Solar Inc.'s new, 1 million-square-foot manufacturing facility.

Construction starts this summer and will be complete in 2019. The facility will manufacture Series 6 thin-film PV modules and triple First Solar's U.S. capacity.

Through RLG's SiteLine services, RLP assisted First Solar with selection of the approximately 110-acre site.

Leading the team:

Justin Rossi, project executive
Tom Schneider, senior preconstruction leader
Tony Hujik, project engineer
Adam Foltz, project manager
Kyle Dodd, business development
Brian Wingate, superintendent
Rod Bowe, **Paul Kwapich** and **Mike Limburg**, SiteLine

...

Toledo - RLI and GEM have been awarded several work packages for the new Cleveland-Cliffs hot-briquetted iron production plant. RLI is design/builder for the:

- 18,998-square-foot administration building
- 25,289-square-foot warehouse
- 25,235-square-foot electrical building

For the three buildings, RLI is self-performing concrete, carpentry and masonry, and GEM is performing plumbing, structural steel erection, electrical, and mechanical work. Work begins in mid-May and will be complete by March 2019.

Leading the team:

Andy Wren, preconstruction
Chris Stueve, project manager
Ryan Zellner, superintendent
Ron Donnal and **Scott Libbe**, business development
Jeremy Snyder, insulation estimator
Paul Anderson, mechanical estimator/project manager

continued on back >

RLG PEOPLE

Welcome to the team!



Ed Cvelbar
Senior Business Development Manager,
GEM Energy,
RLG Cleveland

CONGRATULATIONS

on your promotion!



Nick Lange
Business Development Manager,
GEM Energy,
RLG Michigan

KREFT NAMED EMT 75 HONOREE!



Kyle Kreft, solar manager for GEM Energy, was named one of the "Energy Manager Today 75" Honorees (EMT 75).

EMT 75 recognizes vice presidents, directors, managers and engineers for driving their companies and the energy management industry forward.

EMT 75 Honorees are nominated by industry leaders, then chosen by Energy Manager Today, along with advisers and other industry insiders.

RUDOLPH LIBBE INC
GEM INC
GEM ENERGY
LEHMAN DAMAN
RUDOLPH LIBBE PROPERTIES



Cleveland-Cliffs team continued >

Dave Komives, electrical estimator

Jim Russell, structural estimator/project manager

Nate Schroeder, mechanical estimator
Mike Gossett, electrical project manager
Greg McCann, electrical foreman
Christ Haeft, structural foreman

NEW PROJECT: TOLEDO-LUCAS COUNTY PUBLIC LIBRARY

Toledo - GEM is erecting a new 20,000-square-foot library with a decorative canopy. Located near the Roosevelt and Onyx neighborhoods, the new facility will provide much needed space for more computers and other digital technology.

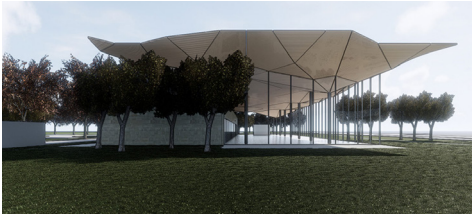
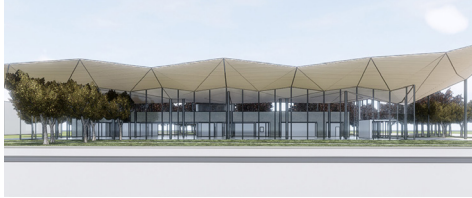
Work begins in June 2018 and will be complete by September 2018.

Leading the team:

Chris Haeft and Jon Marshall, foremen

Denny McAnally, superintendent

Andy Moya, project manager



PROGRESS UPDATE

Johnson Controls Inc. oxide addition, Kernersville, NC



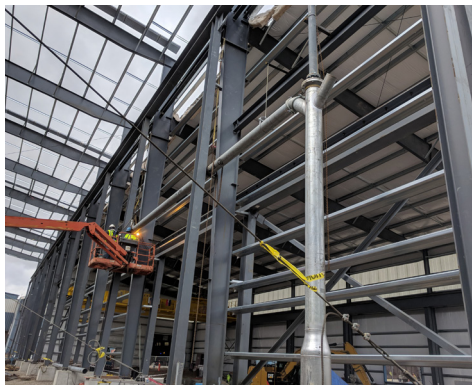
Work continues at JCI's oxide addition in Kernersville, NC. The project achieved the "substantially dry" milestone on April 14 and multiple process installations have begun. Facility and process work are expected to continue through June. Equipment startup and turnover will take place in July.

WORK CONTINUES AT CHARTER STEEL

Construction is underway for a new shipping addition and a rod mill / roll shop expansion

Cleveland - Work has begun on a new "cut-to-length" building for Charter Steel. RLI is performing concrete work and GEM is responsible for structural steel and plumbing. The 130,000-square-foot building is expected to be complete by February 2019.

Pictured right: **Ken Clag** and **Mark Murphy** weld a pipe support for the new storm drain piping in the rod mill building.



JOB WELL DONE! DTE Energy's CNG garage floor

Melvindale, MI - RLI recently completed the CNG garage floor for DTE's Allen Road Service Center.

Kevin Bennett, project manager for DTE, said of the following about RLI's performance:

"Rudolph Libbe has always delivered an excellent product and on schedule. When field issues surface, RLI brings them to my attention immediately and we collectively come up with a solution to keep the project moving forward."

Congratulations to the team on a job well done!

GET SOCIAL WITH RLG

Follow us on social media!

Twitter: @rlgbuilds

LinkedIn: Rudolph Libbe Group

Instagram: @rudolphlibbegroup

Facebook: Ask to join Rudolph Libbe Group Associates

YouTube: Rudolph Libbe Group

STAY ALERT FOR LEADS

Keep us in-the-know!

Each associate who reports a lead is entered into a drawing for \$100 in GEM and RLI merchandise.

Thanks for the leads:

Don Meier
Bryan Darling
Bryan Hutton
Toni Hubbard
Ryan Euler

Congratulations to the winners of the RLG leads drawing for 1st quarter 2018:

Toni Hubbard, GEM
Holly Rodenberger, RLI

Report your leads to:

Christie Fair, RLI, ext. 3246
 Christie.Fair@rlgbuilds.com

Elizabeth Hancock, GEM, ext. 2603
 Elizabeth.Hancock@rlgbuilds.com