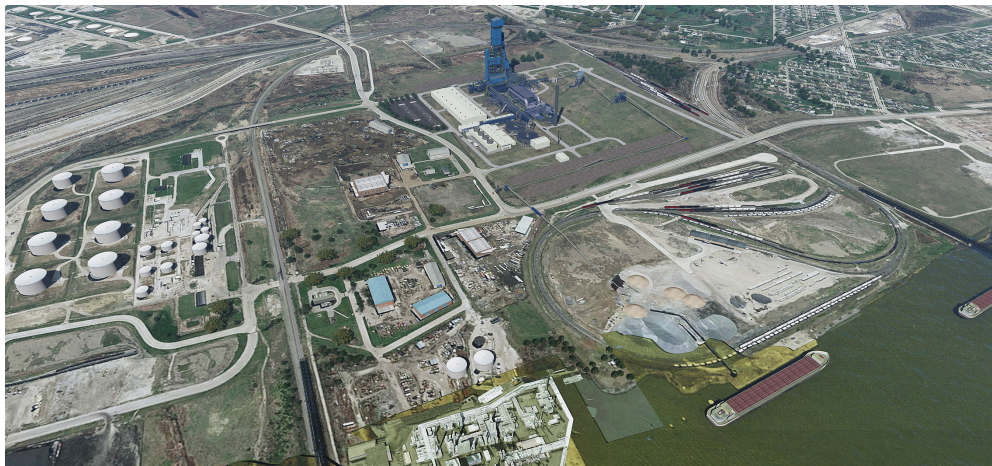


COMMONGROUND

APRIL 2018



Toledo - RLG has been awarded several projects for Cleveland-Cliffs' new hot-briquetted iron production plant. More to come in the next *Common Ground*.

NEW PROJECTS: BETCO AND CLEVELAND THERMAL

Bowling Green - RLG is building a 21,000-square-foot manufacturing facility for EnviroZyme, a division of Betco.

RLI is general contractor and is performing site work and concrete. GEM is erecting the Varco Pruden pre-engineered steel building, plumbing, HVAC and electrical work.

The project is scheduled for completion in June.



EnviroZyme project in progress.

Leading the team:

Christian Simpson, RLI preconstruction leader

Adam Foltz, RLI project manager

Mike Gossett, GEM estimator/project manager

Travis Philo, RLI project engineer

Chris Lee, RLI superintendent

Elijah Bowden, GEM mechanical estimator

Jack Wilson, GEM mechanical project manager

Andy Moya, GEM structural estimator/project manager

Steve Mossing, GEM electrical foreman

Kevin Carpenter, GEM structural foreman

Bob Turner, GEM mechanical foreman

Chris Bachmeyer, RLI carpenter foreman

Frank Bernal, RLI laborer foreman

EnviroZyme is a leading provider of live bacterial cultures used in cleaning applications and industrial, municipal and agricultural wastewater systems. The new facility will be among the nation's most advanced fermentation plants.

Cleveland Thermal on back >

RLG PEOPLE

Associate updates!



Jeremy Damstra
Promoted to Director of Service Sales, Service Group RLG Cleveland

Johnathon Grace
Project Coordinator, Service Group GEM Walbridge



CONGRATULATIONS

on your retirements!



Ron Hanna, RLI senior project manager, retired March 29 after 6½ years at RLI and 47 years in construction.



Quin St. John retired with 40 years of service from RLI's Building Systems Group on March 29.

Ron's high-profile projects include two Build Ohio winners - the Toledo Zoo Aquarium renovation and ProMedica's Renaissance project.

Continued on back >

RUDOLPH LIBBE INC
GEM INC
GEM ENERGY
LEHMAN DAMAN
RUDOLPH LIBBE PROPERTIES



RLG ASSOCIATES WEIGH IN ON EQUIPMENT

Metal Construction News asks, 'What is your most useful tool?'

Visit metalconstructionnews.com to see the interviews with two associates.



Eric Palmer

GEM pipefitter/welder
Most useful tool: Multiprocess pipe welding system



Zak Wilson, RLI carpenter

Most useful tool: Slotted drive system hammer drill with dust extractor

NEW PROJECTS

GEM and RLI start work for Cleveland Thermal

Cleveland Thermal - GEM and RLI are working on a design/build project that will connect chilled water and steam from the Cleveland Thermal Utility Plant to the Virgil E. Brown Center in downtown Cleveland.

GEM is installing:

- A 600-ton chilled water plate and frame heat exchanger to replace two 400-ton chillers.
- Two tube and shell steam heat exchangers to replace natural gas hot water heating boilers.
- Tie-ins from Cleveland Thermal utilities stubbed inside the building to the new heat exchangers.
- Hydronic chilled and hot water piping.
- Insulation.

RLI is performing concrete housekeeping pads.

GEM will perform the chilled water system tie-ins before the cooling season to ensure a smooth transition to the new systems - a necessity, especially for a public services building.

CORIX/Cleveland Thermal is an independent company that supplies chilled water and steam throughout downtown Cleveland.

The project wraps up in late August.

Leading the team:

Mike Beetler, estimator/project manager
Tony Patton, superintendent

RLG'S NEW RETIREES

Quin St. John and Ron Hanna start 'Chapter 2'

> Continued from front

Ron's "Chapter 2" is a new home in North Carolina with volunteer work and time with his wife, Peg, and the grandkids - including twins born in July 2017.

"I'll miss the pool of talent here and our cutting-edge systems," Ron says of RLG. "We have a strong group of young engineers who will be an asset to the company."

Complex projects were Quin's favorites

because they required the most creative design work.

"Cutting Edge Countertops has turned out great with all its challenges, and I think that the owners should be proud of their new building once it's completed."

Quin looks forward to a cruise and "taking life day by day." He'll miss "working with all the great employees the company has hired over the years and watching RLG's continued growth."

STAY ALERT FOR LEADS

Keep us in-the-know!

Each associate who reports a lead is entered into a drawing for \$100 in GEM and RLI merchandise.

Thanks for the leads:

Mike Limburg
Ian McClellan
Brian Neal
Bob Briggs

Mike Keane
Liz Cook
Julie Blackmore

Report your leads to:

Christie Fair, RLI, ext. 3246
Christie.Fair@rlgbuilds.com

Elizabeth Hancock, GEM, ext. 2603
Elizabeth.Hancock@rlgbuilds.com



Steel's up! RLI and GEM at work on Mercy Perrysburg.

A JOB WELL DONE!

Attention to detail pays off

Tallmadge - Owens Corning praised GEM's performance on three recent projects, including an outage.

Dave Westfall, maintenance leader for Owens Corning, said, "GEM did an excellent job leading each project for us. The attention to detail around safety and job scope was the highest I have seen. Thank you for working hard to get things accomplished the right way."

GET SOCIAL WITH RLG

Follow us on social media!

Twitter: @rlgbuilds

LinkedIn: Rudolph Libbe Group

Instagram: @rudolphlibbegroup

Facebook: Ask to join Rudolph Libbe Group Associates

YouTube: Rudolph Libbe Group