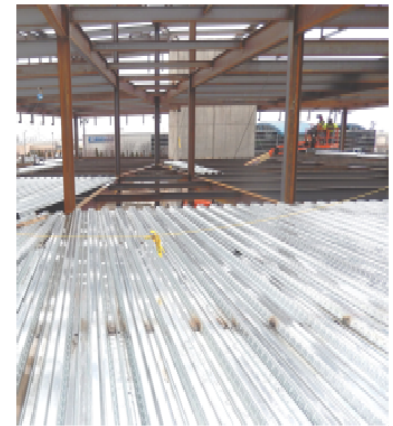


## Safety Flash

### Incident

**Incident:** Two subcontractor employees were installing a 30-foot by 3-foot deck weighing 100-120 pounds on the second floor of a building. The first worker slid his end of the deck into place without coordinating with the second worker. The second worker holding the opposite end lost his balance, slipped off the steel beam and fell about 18 inches below the deck until his retractable engaged. Both workers were properly anchored with their retractables tied directly over their heads.



Where the incident happened

#### Possible contributing factors:

- The two subcontractor employees were inexperienced and didn't have a plan to make sure they slid both ends of the deck into place at the same time.
- It was the first day the two workers had performed the task together.
- One of the workers was new to the task because he was replacing a worker who was offsite attending apprenticeship training.

#### Primary contributing factor:

- The two subcontractor employees were inexperienced and didn't have a plan to make sure they slid both ends of the deck into place at the same time.

#### Solutions:

- Make sure inexperienced workers fully understand how to safely complete tasks.
- The workers have improved their planning and communication, and are using verbal and non-verbal signals.
- The workers are continuing to work together on consecutive days to gain experience installing deck.
- The foremen are reviewing each crew member's abilities and are assigning workers only to the tasks they feel comfortable performing.

#### Action Plan:

- The decking crew reviewed the incident during a safety stand-down.
- Pre-task planning will continue at the crew level.
- The foremen will include more detail on the pre-task plan when new associates are on site or assigned to new tasks.
- The foremen and journeymen are coaching inexperienced crew members and monitoring their work.
- All workers are being reminded that any fall protection equipment involved in a fall must be removed from service.

#### Keep improving

Your health and safety are our core value on every project. If you see a way we can support you in keeping our job sites safe, see your supervisor or contact: Jim Philo, 419/654-2043; Rich Franklin, Michigan, 734/679-7283; Alan Doane, Cleveland, 440/429-0639; Chad Metzger, Lima, 419/279-5348 or Mark Hoffman, 419/360-9280.