

COMMONGROUND

FEBRUARY 2018



Associates at RLG's NE Ohio office are expected to move into their new office space by the second half of April 2018.

NORTHEAST OHIO OFFICE GETS NEW DIGS!

Continued growth calls for more room and a relocation to North Ridgeville

North Ridgeville - RLG's Northeast Ohio operations opened for business nearly 10 years ago in Westlake. After outgrowing three facilities since then, it's time for another exciting change. In April 2018, the Northeast Ohio office will relocate from Independence to North Ridgeville.

The new office location at 4937 and 4940 Mills Industrial Parkway will include three buildings totaling more than 60,000 square feet.

This design/build project will transform a former manufacturing facility into offices and a fab shop that will continue to accommodate the company's growth.

AoDK, a Cleveland-based architecture firm, collaborated with the Northeast Ohio office to design a facility that will demonstrate RLG's range of capabilities. Over 50 percent of the former warehouse has been converted into a single-elevation office.

The space will have exposed ceilings and HVAC/ductwork and welded steel beams.

The new façade will harvest daylight to increase energy efficiency for the building. A large focus was placed on central group meeting areas with smaller huddle rooms to incorporate collaboration into the work space.

RLP assisted with site selection and financed the project. "We were deliberate in our site selection process," said Dave Boyer, general manager, Northeast Ohio operations. "North Ridgeville checked all the boxes for us, from staging requirements to utility needs. The location's access to interstates is also a strong feature that will allow us to maintain responsiveness to our customers across the region."

Services at the Northeast Ohio office have expanded to include structural steel, process piping, electrical, HVAC and plumbing and energy services for the chemical, metals and automotive industries.

>> More renderings on back

RLG PEOPLE Welcome!



Todd Colvin
Weld Quality
Manager,
GEM Walbridge

Tony Alston
Business
Development,
RLG Michigan



Mark Tomasek
Electrical Account
Manager,
RLG Cleveland

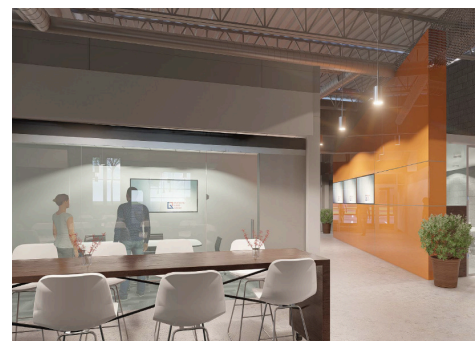
Harrison Newberg
Project Management
Department,
RLI Walbridge



Phil Karger
Project Manager,
RLG Cleveland

RUDOLPH LIBBE INC
GEM INC
GEM ENERGY
LEHMAN DAMAN
RUDOLPH LIBBE PROPERTIES





The new office space intentionally incorporates light, exposed and fluid elements and provides areas for collaboration.

ANOTHER JOB WELL DONE: JOHNSON CONTROLS WET STORAGE ADDITION

Holland - Work has wrapped up on the 23,200-square-foot wet storage addition for JCI's Holland, OH location. Along with an outstanding evaluation report, Gerry Krueger, CBRE project manager, had the following to say about the team's work:

"The team made sure that safety was the number one priority each day. There were constant reminders about safety and PPE. On top of a safe work environment, the project was delivered ahead of schedule."

He added, "There was excellent communication throughout the project and zero surprises."

RLI served as design/build contractor and self-performed concrete, foundation and sitework. GEM self-performed electrical and mechanical work.

STAY ALERT FOR LEADS KEEP US IN-THE-KNOW!

Each associate who reports a lead is entered into a drawing for \$100 in GEM and RLI merchandise. Thanks for the leads:

Ashley Stenger
Gail Ritchie
Ian McClellan
Corey Bettenbrock

Report your leads to:
Christie Fair, RLI, ext. 3246
Christie.Fair@rlgbuils.com

Elizabeth Hancock, GEM, ext. 2603
Elizabeth.Hancock@rlgbuils.com

GET SOCIAL WITH RLG

Follow us on social media!

Twitter: @rlgbuils
LinkedIn: Rudolph Libbe Group
Instagram: @rudolphlibbegroup
Facebook: Ask to join Rudolph Libbe Group Associates
YouTube: Rudolph Libbe Group

NEW PROJECT!

Chillicothe - RLG is working on an HVAC replacement project for Kenworth. RLI is the general contractor and GEM is performing structural steel work. Work has started and will wrap up in May 2018.

Leading the team:
Jim Russell, structural project manager
Matt Arnold, preconstruction
Corey Bettenbrock, project manager



Perrysburg - Progress continues on the expansion of Mercy Health's campus. The 101,000-square foot facility will open in spring 2019.

WELCOME! SPRING 2018 CO-OPS

More co-ops in the March edition of Common Ground



Matthew Amentini
University of Akron
Structural, RLG Cleveland



Collin Bohland
University of Toledo
Project Management
RLI Walbridge



Melissa Foust
Bowling Green State University
Project Management
RLI Walbridge



Jaxon Rowe
University of Toledo
Mechanical, GEM Walbridge