

COMMONGROUND

JULY 2017



Northwood, OH - Northwood's PK-12 school is on track to open in fall 2017. RLI is serving as construction manager for the new 130,000-square-foot building that will become home to 900 students, teachers and staff in the 2017-18 school year.

NEW PROJECTS

Lubrizol's nitrogen venting/pneumatic sample system;
Advanced Integrated Tooling Solutions office build-out and secure room

Painesville, OH - Rudolph Libbe Group is installing a nitrogen venting and pneumatic sample system for Lubrizol. RLI is construction manager and completing equipment and pipe support foundations and containment curbing. GEM is installing vent pipe and sample tube systems. All work is being fabricated in Oberlin and shipped to the site for installation.

The project will also provide Lubrizol with a new drum filling facility outside the existing plant footprint. Once complete, the building addition will eliminate significant traffic, making the plant much safer.

The project will complete in early August 2017.

Leading the team:

Mike Beetler, project manager/estimator
Alex Koler, fab shop foreman
Robert Schneider, field foreman
Mike McCafferty, piping superintendent

Ryan Miglets, project engineer
Alan Doane, civil estimator

...

Chesterfield, MI - The Rudolph Libbe Group Michigan office will be building out an office and a secure room in the manufacturing area at Advanced Integrated Tooling Solutions (AIST).

The team foil-wrapped the space to prevent electromagnetic radio frequency waves from capturing information or communication inside the room.

Phase 1 of this project is complete and phase 2, including HVAC work, just started and will wrap up in mid-October.

Leading the team:

Ken Swartz, project executive
Joe Kreitsch, account manager
Rich Franklin and Dan Luna, project superintendents
Steve Johnson II, project engineer

RLG PEOPLE

Welcome!

Joe Totts
Project Engineer
Mechanical
Department, GEM



Michael Jarrell
Preconstruction
Services,
RLI

New assignment

A.J. King
Team Leader
VDC Department,
GEM



FOLLOW US

Find us on social media, share your stories and help us grow!

Twitter:

@rlgbuilds
@GEMIncorporated
@GEM_Energy
@RudolphLibbeInc

LinkedIn:

GEM Incorporated
GEM Energy
Rudolph Libbe Inc.

Facebook:

Rudolph Libbe Group Associates

RUDOLPH LIBBE INC
GEM INC
GEM ENERGY
LEHMAN DAMAN
RUDOLPH LIBBE PROPERTIES



COMPLETED PROJECT

Tata Steel's new nickel zinc coating line

Warren, OH - Tata Steel, a cold-rolled and plated steel manufacturer, chose the Rudolph Libbe Group to install a new nickel zinc coating line. The design/build project involved raising the roof in two areas by using a Varco Pruden building system. This non-conventional penthouse solution required integration and precise engineering between conventional steel and pre-engineered steel.

Work was completed during the course of multiple outages and was coordinated to accommodate plant production. Even with these challenges, RLG beat the outage schedule by five days and had the line operating at optimum production by the middle of March 2017.

The Rudolph Libbe Group performed floor removal and repairs, equipment foundations, installation of process equipment and process piping.



St. Joseph, MO - Johnson Controls Inc. needed a new guard shack and the GEM Process Solutions crew got creative. Above is the new shack, created from a shipping container!

Jeff Scheffel, project manager at Tata Steel said, "In all aspects and throughout the entire project, the Rudolph Libbe Group's craft supervision was excellent and was motivated to do a first class job. Each of RLG's supervisors worked very well with each other in a cramped area with no safety problems."

Leading the team:

Mike Ross, Alan Doane and Ryan Miglets, estimators/project managers
Pat Butterfield, lead superintendent
Jeff Key, ironworker superintendent
Keith Wieseman, millwright superintendent
Mark Lucas, piping superintendent
Rich Roth, civil superintendent
Dave Boyer, business development
Mike Sousaris, safety manager

STAY ALERT FOR LEADS

Thanks for reporting leads!

Andy Wren
Mike Beetler
Austin Bischoff

Kody Kill
Mike Jarrell
Don Lawson

Congratulations to the winners of the leads drawing for 2nd quarter 2017:

Mike Jarrell, RLI
Skip Show, GEM

Each associate is entered into a drawing for \$100 in RLI or GEM merchandise. The next drawing is in October.

Report your leads to:

Elizabeth Hancock, GEM, ext. 2603
 Elizabeth.Hancock@RLGbuilds.com

Christie Fair, RLI, ext. 3246
 Christie.Fair@RLGbuilds.com



Defiance, OH - Work continues on the new middle school, high school and gymnasium. Work will wrap up in December. Move-in will take place during winter break and classes will resume in the new facilities January 1, 2018.

CUSTOMER FEEDBACK

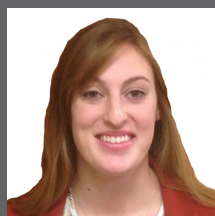
RLG Michigan recently renovated offices for Rassini International

"Rudolph Libbe Group was always on top of their game and absolutely great to work with. Any issues that arose were taken care of immediately. Having someone on site at all times during the renovation was vital. Especially when issues with other contractors arose, RLG's team stepped in to deflect and correct. It was seamless working with the team."

- **Bob Evans**, facility manager and lab supervisor, Rassini International

WELCOME, SUMMER CO-OPS!

More co-ops in the next *Common Ground*



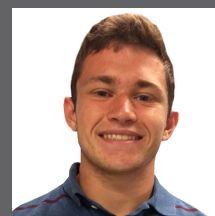
Ashley Brown
 RLI Project Management



Natalie Gaynier
 RLG Human Resources



Kevin Kralovic
 RLI Project Management



JD Crawford
 GEM Process Solutions



McKenzie Egbert
 RLG Human Resources