

# COMMONGROUND

MARCH 16, 2017

## 'A HUGE ACCOMPLISHMENT'

### RLG site management team at Ford Sharonville renovation

**Ford, Sharonville** - RLI and GEM Site Management associates from the Toledo and Lima offices are performing concrete and utility work in a 60-year-old transmission plant.

The 700,000-square-foot project is about 85 percent finished, and will be complete May 1.

RLI is performing concrete demo and removing and placing sub-base for about 700,000 square feet of existing slab.

GEM is performing underground piping and electrical grounding. Demolished



RLI removes concrete for reuse and replacement on the Ford project.

concrete is being crushed for reuse onsite. RLI and GEM are coordinating closely to ensure schedule milestones are met in numerous work areas.

A safety challenge: The RLG crews are working in an operating facility. Dust and vibration control must be continuously maintained.

"It's been so successful with the number of resources, equipment and manpower, working around an operating facility, with zero safety incidents," says **Brian Mears**, RLI project manager. "It's a huge accomplishment on the part of the team."

#### Leading the team:

**Joe Powell**, project engineer  
**Brian Mears**, project manager  
**Jerimiah Carson**, site superintendent  
**Chris Lee**, superintendent  
**Charlie Korotnayi**, electrical project manager  
**Brandon Miller**, electrical foreman  
**Nick Berning**, pipefitter general foreman  
**Jay Meyer and Eric Eckman**, operator foremen  
**Rory Figley**, laborer foreman  
**Chris Young**, millwright foreman

## CONGRATULATIONS, DAN STARK!

### TSPE's choice for 2017 Engineer of the Year

GEM's **Dan Stark** has been honored as 2017 Toledo Area Engineer of the Year.

He joined GEM 10 years ago as a project manager, progressing to his current position as senior preconstruction and operations leader on RLG's GEM Process Solutions (GPS) team.



This is Dan's second honor from the Toledo Society of Professional Engineers (TSPE).

He was named Young Engineer of the Year by the TSPE 25 years ago.

Please join us in congratulating Dan!

## RLG PEOPLE

### A new assignment



**Jeremy Damstra**  
Business Development Manager  
GEM Energy Service Group  
Cleveland

### Welcome to the team!

**Stephanie Andrews**  
Solar Project Coordinator  
GEM Energy  
Walbridge



### Kelly Trudel starts 'Chapter 2'



Kelly and her husband John Trudel at her retirement party

**Kelly Trudel**, GEM controller, celebrated her 16-year career at RLG and a well-deserved retirement on Feb. 9, with her coworkers and husband John.

Now in warm, sunny San Antonio, the Trudels are busy settling into their new

Continued on back >

**RUDOLPH LIBBE INC**  
**GEM INC**  
**GEM ENERGY**  
**LEHMAN DAMAN**  
**RUDOLPH LIBBE PROPERTIES**



## THANKS FOR THE LEADS

**Brandon Gartee**  
**Jeannette Snyder**  
**Ashley Stenger**

**Tony Hujik**  
**A.J. King**  
**Andy Wren**

Each associate who reports a business lead is entered into a drawing for \$100 in RLI or GEM merchandise. The next drawing is in April for leads reported in January, February and March 2017.

Report your leads to:

**Haley Buchman, GEM, ext. 2603**  
**Haley.Buchman@RLGbuilds.com**

**Christie Fair, RLI, ext. 3246**  
**Christie.Fair@RLGbuilds.com**

## WELCOME!

Spring co-ops join RLG



**Dominique Stutzman**  
 UT  
 Site Management  
 RLI Walbridge



**Joe Stibley**  
 UT  
 Project Management  
 RLI Walbridge



**Nathan Wingate**  
 UT  
 VDC  
 GEM Walbridge



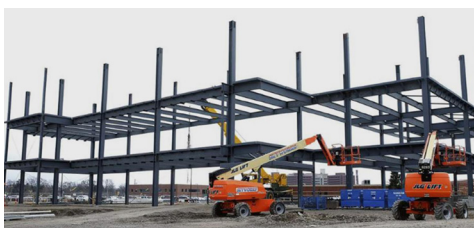
**Jasmine Zogheib**  
 U of Akron  
 Site Management  
 RLI Cleveland



**Matthew Young**  
 BGSU  
 Special Accounts  
 RLI Walbridge



**Michael Ebert**  
 UT  
 Mechanical  
 GEM Walbridge

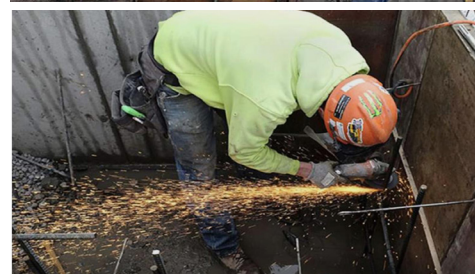
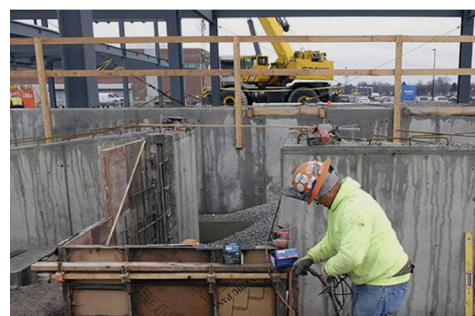


## RLG TEAM IN THE NEWS

**Toledo Blade features ProMedica medical office building**

Steel is going up at the ProMedica office building in west Toledo.

In a March 5 photo essay, the Toledo Blade featured RLI associates **Antonio Garcia**, laborer (top right), and **Eric Riley**, carpenter.



## NEW PROJECTS

**Fresenius dialysis center and Perstorp HVAC**

**Fresenius Medical Care, Toledo** - RLG is working on a 7,200-square-foot dialysis center near downtown Toledo.

RLI is general contractor for the building shell and is self-performing sitework, building concrete, carpentry and masonry. GEM is performing HVAC work.

Foundation work starts this week for the single-story brick building. The project will be complete in August.

Fresenius is a repeat customer for RLG. Our associates built a distribution center in Oregon for the company, which provides products and services for people with kidney disease and other chronic conditions.

Leading the team:

**Kyle Stang**, RLI account manager

**Jim Cannon**, RLI superintendent  
**Mike Ebert**, GEM estimator  
**Jack Bunge**, GEM project manager  
**Eric Eckman**, RLI site foreman

...

**Perstorp, Toledo** - GEM is replacing computer room HVAC equipment, including a rooftop unit, two computer room air conditioning units, a chiller and an air handling unit to keep process control equipment cool.

The design/build GPS project will be complete on April 1.

Leading the team:

**Nate Schroeder**, estimator  
**Jeff Sneider**, electrical project manager  
**Bryan Darling**, project engineer  
**Josh Griffin**, pipefitter foreman  
**Ellsworth Hall**, electrical foreman

## KELLY TRUDEL RETIRES FROM GEM

> Continued from front

house and meeting their neighbors.

What's next? "Our plan is to play as much golf as we can," Kelly says. They also want to learn Spanish and do volunteer work.

She has good memories of interesting, fulfilling work at GEM. "I liked

the challenges, the changes that happened when I was there. We bought a couple companies, those kinds of things," Kelly says.

She will miss her coworkers. "I liked working with them, seeing them every day. Keeping up with their work, their careers and their personal lives."