

COMMONGROUND

FEBRUARY 9, 2017

NEW PROJECTS

ProMedica neuroscience project and Hirzel warehouse addition

ProMedica neuroscience/laboratory facility, Toledo - RLI and GEM are building a 122,000-square-foot neuroscience facility and campus-wide laboratory.

RLI is construction manager and is self-performing concrete. GEM is performing steel erection.

The project involves running 3,000 feet of pneumatic tube from the Toledo Hospital to the new building. The project will be complete in summer 2018.



Leading the team:

Tom Schneider, RLI senior preconstruction leader

Rob Wissolik, RLI project manager

Andy Moya, GEM estimator/project manager

Ryan Zellner, RLI superintendent

Mike Mutscheller, RLI project executive

Steve Mack, RLI cement finisher foreman

Eric Riley, RLI carpenter foreman

Antonio Garcia, RLI laborer foreman

Chad Cope, GEM ironworker general foreman

...

Hirzel Canning, Ottawa - RLI and GEM are building an 87,650-square-foot warehouse, our fourth new building for Hirzel. RLI is design/build contractor and is

self-performing sitework and concrete. GEM is performing steel erection.

The project includes an ESFR (early suppression/fast response) fire protection system, LED lighting, three truck docks and about 35,000 square feet of concrete pavement for truck dock access. Work begins in March and the project is scheduled for completion in August.

The Varco-Pruden pre-engineered metal building will include Varco-Pruden Wide-Bay Purlins and PrisMAX SL skylights.

Due to the new energy code, the project will be the most heavily fiberglass-insulated VP building ever constructed by RLG.

Leading the team:

Troy Fritch, RLI preconstruction leader

Rob Brown, RLI project manager

Andy Moya, GEM estimator/project manager

Quin St. John, RLI pre-engineered metal building coordinator

Ryan Euler, RLI superintendent

Don Cherry, GEM ironworker general foreman

Dick Kelsey, business development

...

La-Z-Boy R&D, Dayton, Tennessee - RLI is design/build contractor for La-Z-Boy's 72,000-square-foot Innovation Center.

About 50,000 square feet of the project will be a pre-engineered metal building used for process space.

Because the facility will house production and testing equipment, RLI is using Building Information Modeling (BIM) for clash detection and is developing a fabrication-ready model to reduce the schedule.

Continued on back >

RLG PEOPLE

Welcome to the team!



Jaime Hart
Business Development
Manager
RLG Cleveland



Becky Kerlin-Hyatt
Accounting Clerk
Service Group
GEM Walbridge



Jim Paulitzky
Account Manager
GEM Cleveland



Steven Johnson II
Project Engineer
RLG Michigan



Brad Barnes
Account Manager
Special Accounts
RLI Walbridge



Travis Maag
Preconstruction
RLI Walbridge

RUDOLPH LIBBE INC
GEM INC
GEM ENERGY
LEHMAN DAMAN
RUDOLPH LIBBE PROPERTIES

 **RUDOLPH
LIBBE
GROUP**

THANKS FOR THE LEADS

Congratulations to the winners of the RLG leads drawing for 4th quarter 2016:

Kyle Stang, RLI
Skip Show, GEM

Thanks for the leads!

Austin Bischoff
Julie Blackmore
Todd Box
Liz Cook
Denise Cromwell
Travis Maag

Each associate who reports a business lead is entered into a drawing for \$100 in RLI or GEM merchandise. The next drawing is in April for leads reported in January, February and March 2017.

Report your leads to:

Haley Buchman, GEM
ext. 2603
Haley.Buchman@RLGbuilds.com

Christie Fair, RLI
ext. 3246
Christie.Fair@RLGbuilds.com

WELCOME!

Spring co-ops join RLG!



Mark Mulhollen
University of Akron
Mechanical
GEM Cleveland



Eric Hinkle
UT
Special Accounts
RLI Walbridge



Doug Isaly
UT
Project Management
RLI Walbridge



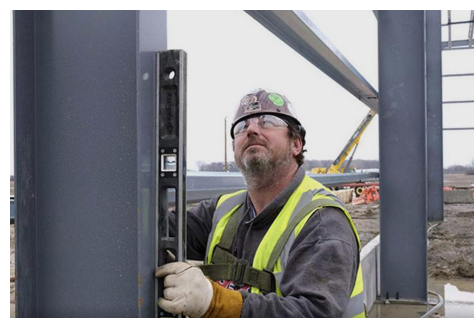
Tony Simon
UT
Mechanical
GEM Walbridge

RLG PEOPLE IN THE NEWS

Toledo Blade features Principle Business Enterprises and Allermuir teams

RLG associates were recently featured in the Toledo Blade's "Under Construction" photo essays on the Principle Business Enterprises and Allermuir U.S. projects.

Below is **Kevin Kent**, GEM ironworker at Principle Business Enterprises; at top right is **Ron Ellis**, GEM ironworker superintendent and bottom right, **Pat Blevins**, RLI cement finisher, both at Allermuir U.S.



NEW PROJECTS

La-Z-Boy Innovation Center and Penske renovation

> La-Z-Boy R&D continued from front

Construction starts this month and will be complete in January 2018.

Leading the team:

Mike Limburg, preconstruction leader
Bryan Cox, project manager
John Mazur, superintendent
Scott Libbe, business development
Ryan Bannister, project executive

RLI was awarded the Innovation Center project as a direct result of our team's great performance on the La-Z-Boy World Headquarters in Monroe.

...

Penske, Avon Lake - RLI and GEM are building a new locker room, restroom and installing



An architectural rendering of the La-Z-Boy Innovation Center.

ing an overhead door into a service bay. RLI is general contractor and is self-performing excavation, backfill, metal studs and drywall. GEM is performing plumbing work. The project wraps up this month.

Leading the team:

Matt Eichler, estimator/project manager
Scott Hunkley, superintendent

A PERFECT '10' FROM CORNERSTONE

Heidi Kassab, CEO of Michigan-based Cornerstone Community Financial gave RLI a perfect "10" on the final customer satisfaction survey.

She says: "This was my first experience with RLI and with our main office in Michigan. I was

concerned that the project would be more difficult."

She adds, "This project is actually more organized and timely than our in-state projects. Every member of the RLI team is amazing to work with. I would highly recommend them."