

COBBLESTONE CONDO 2

FOR SALE



Property Overview

PROPERTY HIGHLIGHTS

Class A condominium Park on wooded setting, overlooking 4-acre pond, adjacent to University Parks Trail
On TARTA service line, and is only one block to light

Building is 100% occupied by a strong national tenant
11,165 SF, single-story building, constructed in 2003

AREA DEMOGRAPHICS

Lot Size	4.7 AC
Dimensions	Irragular
Zoning	C-2
Parking	1/200
Type Construction	Wood Frame/Fiber Cement Siding
Utilities	Electric - Toledo Edison Gas - Columbia Gas Telephone/Fiber Optic - Buckeye or Verizon

PRICING INFORMATION

OFFICE	COST
Entire Building - 11,165 SF	???

Build-to-suit available

PROPERTY OVERVIEW

CONTACT

Rod Bowe
419-601-1233
Rod.Bowe@
rlgbuilds.com

LOCATION

7311 Crossleigh Court
Sylvania Twp., Lucas
Co.
Toledo, OH

CURRENT TENANT

Morgan Stanley

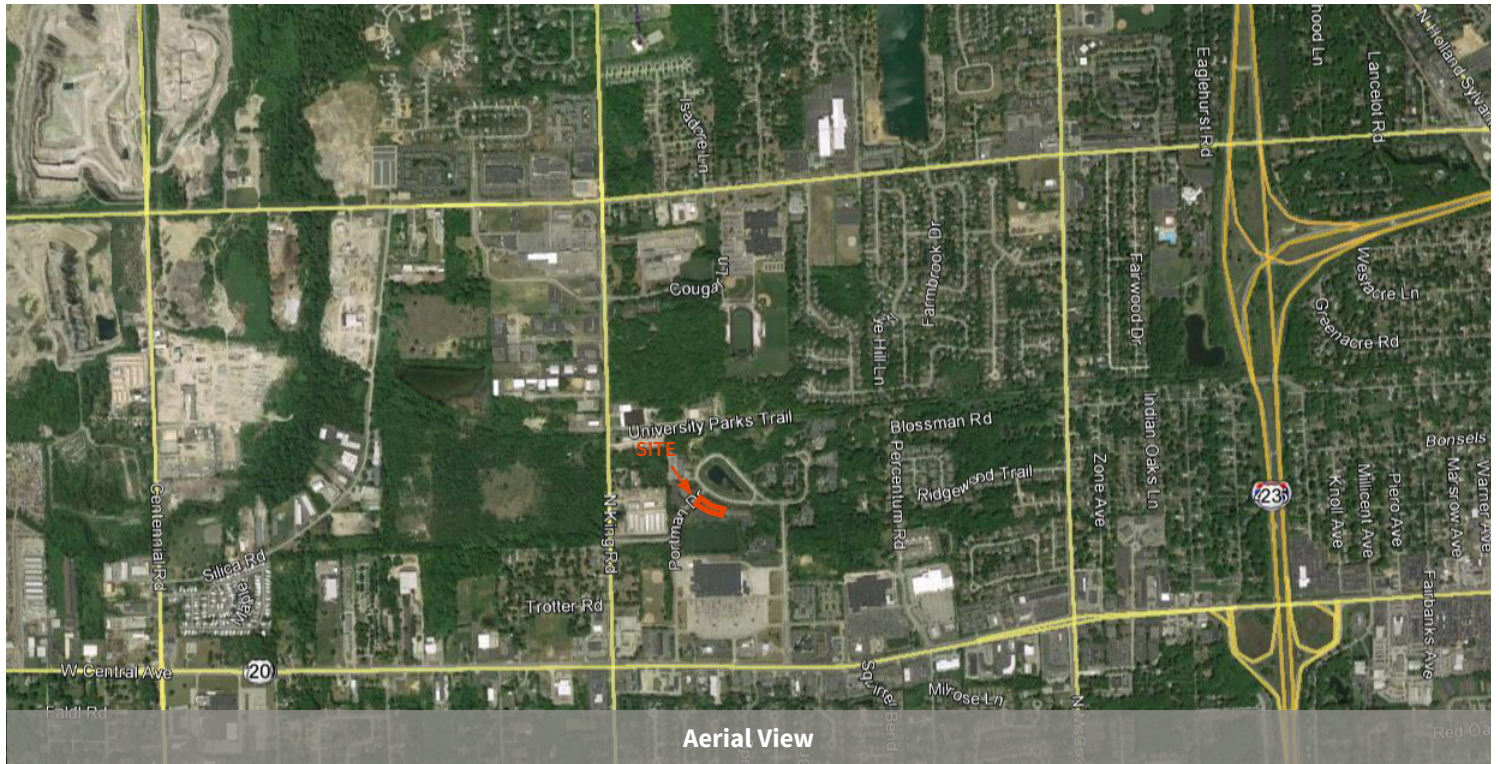
ACCESS/EGRESS

Highways, 1 mile to
I-475/US-23

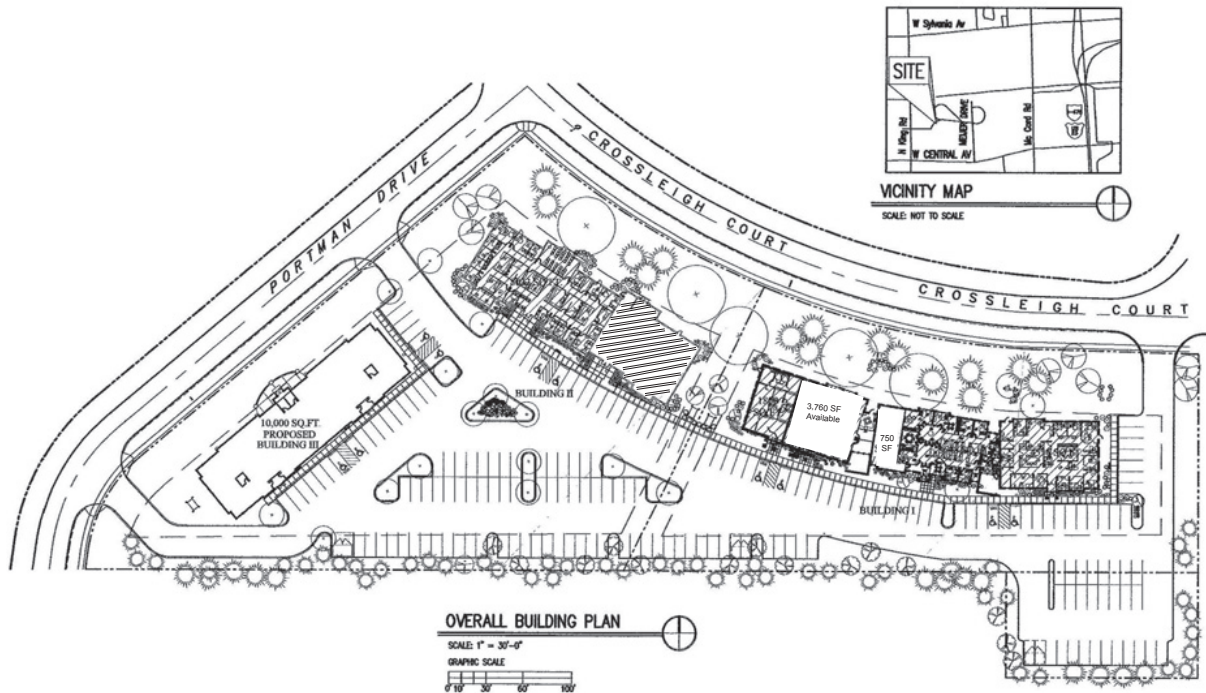


COBBLESTONE CONDO 2

FOR SALE



Aerial View



Parcel Map